



MONTHLY MEMBERSHIP PROGRESS REPORT

District 11 E2

Results as of: 4/30/2014

GMT: GARY ANDERSON

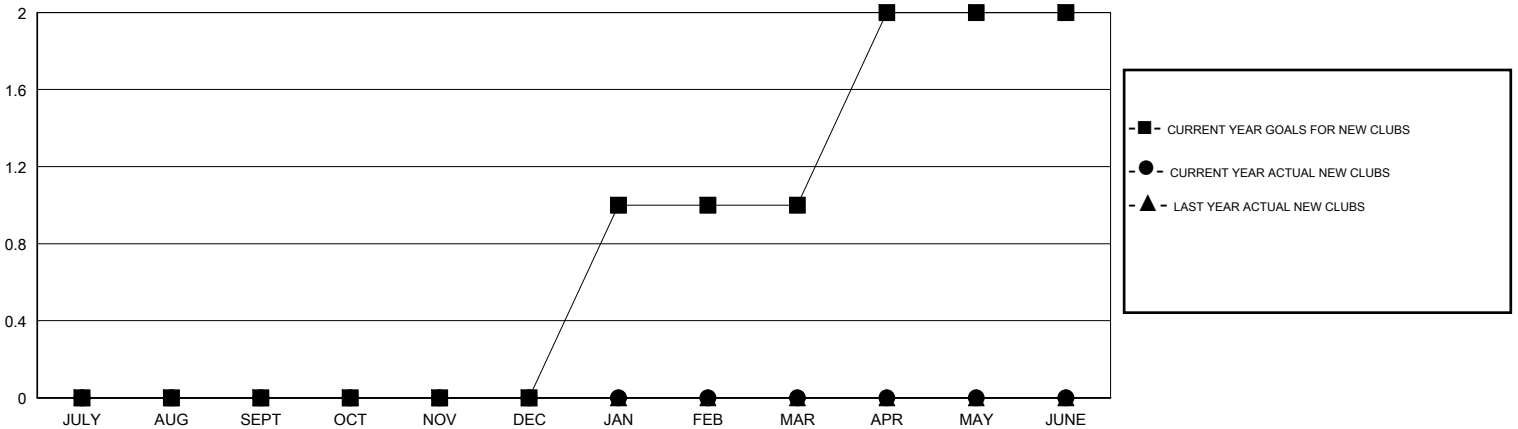
LOCATION MICHIGAN

GMT CA 1

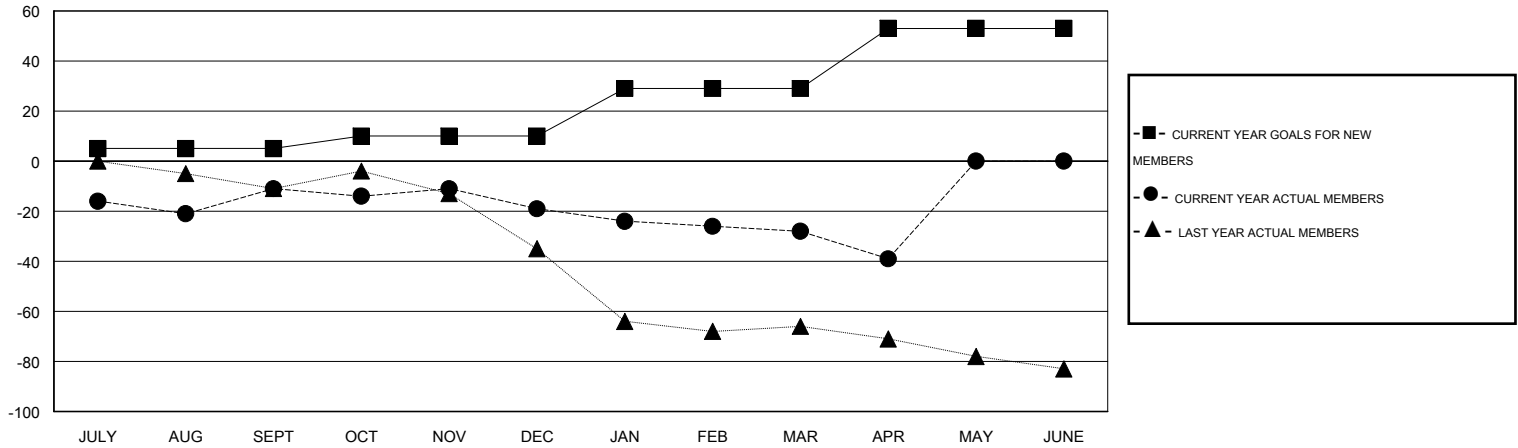
Clubs				
RESULTS FOR 2013-2014				
QUARTER	NEW CLUB GOAL	ACTUAL NEW CLUBS	ACTUAL DROPPED CLUBS	ACTUAL NET GAIN/LOSS
JULY/AUG/SEPT	0	0	0	0
OCT/NOV/DEC	0	0	0	0
JAN/FEB/MAR	1	0	0	0
APR/MAY/JUNE	1	0	0	0

Members				
RESULTS FOR 2013-2014				
QUARTER	NEW MEMBER GOAL	ACTUAL TOTAL MEMBERS ADDED	ACTUAL DROPPED MEMBERS	ACTUAL NET GAIN/LOSS
JULY/AUG/SEPT	5	26	37	-11
OCT/NOV/DEC	5	24	32	-8
JAN/FEB/MAR	19	17	26	-9
APR/MAY/JUNE	24	3	14	-11

GOALS AND ACTUAL NEW CLUBS CUMULATIVE



GOALS AND ACTUAL MEMBERS CUMULATIVE



DROPPED CLUBS: 0

21 CLUBS OF 37 ADDED 1 OR MORE NEW MEMBERS

GENDER DISTRIBUTION	
MALE	868 (76.54%)
FEMALE	266 (23.46%)

DROPPED MEMBERS	
DECEASED	17
CLUB CANCELLED	0
OTHER	92
TOTAL	109

[CLICK HERE FOR HEALTH ASSESSMENT DATA](#)

FAMILY UNIT MEMBERS	159
HEAD OF HOUSEHOLD	79
NON-HEAD OF HOUSEHOLD	80